



Swallowfield Parish

# Newsletter

September 2022

## FRESH START FOR LOCAL BUS SERVICE

Wokingham Borough Council has confirmed that a new bus service will replace the existing 'Tiger 7' route, which serves the Parish and surrounding areas, from 5 September 2022.

The new 600 service, described by WBC as a "better" and "regular hourly service" is an extension of the current Mereok park and ride route and will continue to be run by Reading Buses. It will operate an hourly timetable Monday to Saturday, with the first bus departing from Riseley for Reading at 6.21am and the last bus at 11.06pm.

The 600 will pass through Swallowfield, Spencers Wood and Three Mile Cross before journeying along the A33 into Reading town centre, stopping at the Broad Street Mall, Market Place and Station Road. The first bus will leave Reading for Riseley at 5.35am and the last bus at 10.30pm.

A second 600 route will also run hourly between Reading town centre and the Thames Valley Science Park in Shinfield, via Hyde End Road and Fullbrook Avenue. Passengers are advised to check the destination on the front of the bus before boarding.

The new service is being funded until 31 March 2023 by s106 developer contributions resulting from housebuilding in the Borough. Once this funding ends in March, the contract will be put out for re-tender.

Cllr Paul Fishwick, executive member for active travel, transport and highways, said: "This is a short-term measure, but an important one considering the significant number of residents who would have been affected by losing these services.

"We're delighted to have kept them going for now and would like to thank everyone who worked hard to investigate different options to make this possible – including our own officers, Reading Buses and Swallowfield and Shinfield parish councils, which played a very active role.

"Buses are a crucial part of the bigger picture when it comes to reducing car use - particularly in rural areas like those south of the M4, where they can provide a vital

link between villages and to jobs, shops and services in bigger towns.

"By enabling and encouraging their use, we can improve air quality and reduce carbon emissions to help tackle the climate emergency. This will also improve people's health while addressing inequality and rising living costs by offering a genuinely affordable way of getting around."

Cllr Fishwick said the Council would keep fighting for bus services but they were more likely to survive if passenger numbers increased to a healthier level. He added: "I would urge as many people as possible to travel by bus - it's safe, affordable, convenient and far less polluting than driving.

"Buses will be even more needed in years to come, which is why we're doing all we can to meet this challenge. But if we don't all play our part to keep them afloat now, we may suddenly find it's too late."

Cllr David Lamont, Vice-Chair of Swallowfield Parish Council, said: "Since the temporary removal of the number 7 earlier this year Swallowfield Parish Council has played a very active role in relation to the future of our local bus service, ranging from surveying residents and reporting on the findings, to contacting Reading Buses and continuing to engage and work with Wokingham Borough Council, alongside Shinfield Parish Council, on the issue.

"Our local bus service is essential for some residents in our Parish and an important lifeline for others.

"As a Parish Council we feel that the planned changes represent a successful outcome and are very pleased that everyone in our community will benefit from a regular and reliable bus service. As Cllr Fishwick has said, residents absolutely need to make regular use of the service to ensure that it remains viable in the longer term."

**Further information on the 600 route and timetable are now available at [www.reading-buses.co.uk](http://www.reading-buses.co.uk). A leaflet outlining the new service will also be available on the Swallowfield Parish Council website or by emailing [clerk@swallowfieldpc.gov.uk](mailto:clerk@swallowfieldpc.gov.uk) to request a copy.**



# News in Brief

## DAFFODIL BULB PLANTING

Help us inject some extra colour around the Parish and to give nature a head start next spring. Please join us in the Davies Room at Swallowfield Parish Hall from 11.00am - 2.00pm on Saturday 10 September, to choose a location and collect your bulbs. Spades will be provided but you are welcome to bring your own tools and remember gloves! Residents of all ages are very welcome. To register to join us on the day, or with any questions, please email [david.lamont@swallowfieldpc.gov.uk](mailto:david.lamont@swallowfieldpc.gov.uk)

## DOG WASTE

Please remember to pick up your dog waste and either use the dedicated bins where available or take it home with you.

## WORKING WITH HECKFIELD PARISH COUNCIL

Jonathan Wheelwright, Chair of Swallowfield Parish Council, and Vice-Chair David Lamont recently met with the Chair, Simon Richards, and Clerk, Susan Turner, of Heckfield Parish Council to discuss and explore our common interests.

The conversations focussed on cross-border topics that are of concern to both parishes. They ranged from ensuring that residents living at Duke's Meadow feel welcomed into and part of Riseley to working together to tackle the issue of speeding in our parishes, particularly in and around Riseley and its approach roads. Also discussed was how we cooperate to ensure a common response to new planning applications close to the Parish boundary.

## COFFEE CORNER

Coffee Corner is held in the Davies Room at Swallowfield Parish Hall every Wednesday, 10.30am-12.30pm.

It provides an opportunity to meet other local residents and enjoy tea, coffee and a selection of cakes for only £2. All profits are donated to local charities.

## DONATION – A THANK YOU

Thank you to Swallowfield Pitt Bridge Masonic Lodge for a kind donation of £240 towards the play equipment in Riseley.



# WELCOME

Welcome to the new look Swallowfield Parish Newsletter. We do hope you enjoy its fresh and bright new look for 2022, with content that we hope will interest and inspire you about the great Parish and community we live in.

We have had quite a summer. Usually, the autumn newsletter starts with regrets that we've not seen much sun; that couldn't be further from the truth this year although the drought and hot nights have been difficult. Everything is tinder dry but slowly turning back to green as the rain finally returns. With luck, our water supply will also be flowing more normally by the time this newsletter is published.

This summer has seen many marvellous Parish events. We started with the Church Fete, quickly dashed on to the Queen's Platinum Jubilee, enjoyed the Horse Trials and the Annual Parish Meeting (more on this in a moment.) There were also the events to support Ukraine: with egg painting, the RSF's quiz night and Arts and Crafts for Ukraine – all brilliantly organised and well supported events. A huge thank-you to all the organisers and everyone who attended.

We held the Annual Parish Meeting (APM) in late June – this was the first since 2019. The APM is a meeting about the Parish, not the council, where we discuss the important matters that affect us and also showcase the best of the Parish. Many thanks to our excellent speakers, Natalie Gaibani who spoke about the history and plans of the Farley Estate, Tanja Maskall and Kate Armitage who shared their experiences of hosting Ukrainian families, and Cllrs Ian Fullerton and Simon Taylor who updated us on Speedwatch along with Mike Goldsmith.

As if that wasn't enough, the day before Open Gardens, we enjoyed MaxStock; it was huge fun and a great way to celebrate the legacy of Max Bowker. Thank-you to all the team for getting this

complex event in place – please take a bow! ...And we still have the Swallowfield Show to look forward to. What a wonderful place we live in.

I'm delighted to welcome Simon Taylor as our newest councillor, taking the Swallowfield Parish Council up to its full complement. Simon is a great addition to the team, having already worked on Speedwatch, and is passionate about protecting our community life.

Even during the summer break things move on. We're delighted that we will keep the public bus service through Swallowfield Parish. Public transport is important for our community as well as being a healthier and greener way to get around. The current funding runs until the start of spring next year when there will be a further review, but between now and then we'll continue to work with Wokingham Borough Council to ensure its continuity.

The Speedwatch teams have been working very hard on our behalf, out at the roadside for long hours to make our streets safer. It is challenging and the team are working with Thames Valley Police on ways to cut down on reoffending; this is a particular problem in Riseley. If you do see the team working outside your house, please offer them tea which is their lifeblood; they deserve it!

Finally, if you feel like helping to add some spring colour around the Parish, please do sign-up to join us on 10 September to plant some Daffodils...

**Cllr Jonathan Wheelwright  
Chair**

[jonathan.wheelwright@swallowfield.pc.gov.uk](mailto:jonathan.wheelwright@swallowfield.pc.gov.uk)

# Contents

- 01 Fresh Start for Local Bus Service**
- 03 Welcome**
- 03-07 Parish News**
- 08-15 Local Clubs and Groups**
  - 12 View from the Hill**
  - 14 Local Member Update**
  - 14 Church Update**
  - 15 Swallowfield Pre-School**
  - 15 Swallowfield Medical Practice**
- 16 Local Contacts**



## MEET YOUR COUNCIL

I was delighted to join the Parish Council in 2021, having lived in and around the local area since 1995. What a beautiful place it is, with a strong sense of community.

I am a fellow of the Chartered Institute of Marketing and work in marketing and communications for a leading law firm.

I am vice chair and the lead councillor for communications. I have also recently been involved in areas ranging from the Tiger 7 bus service to various projects tied to waste,

recycling and environmental matters.

I thoroughly enjoy attending local events ranging from the annual litter pick through to Sparks in the Park, the Swallowfield Show, the Church Fete and Swallowfield Open Gardens, and wasn't MaxStock great! As a family we are members of Riseley Tennis Club too.

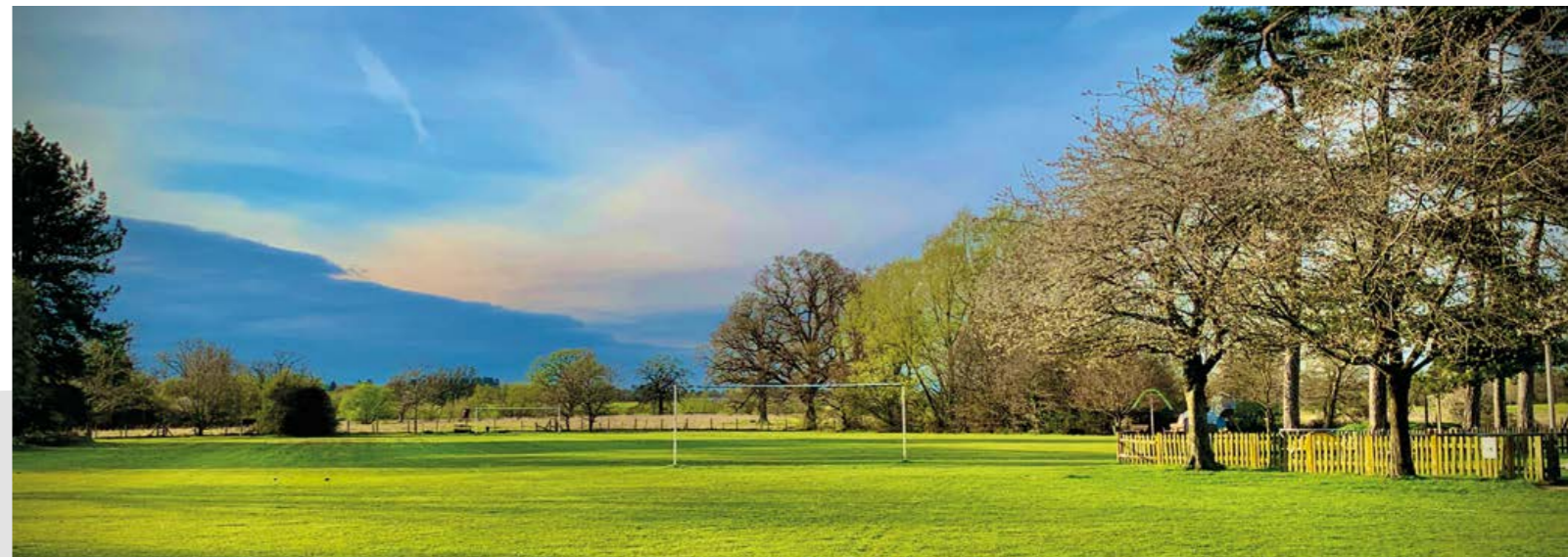
For the past four years I have been (and remain) treasurer and a trustee of Swallowfield Pre-School and I also work voluntarily with Young Enterprise Berkshire. I am passionate about the environment and living more

sustainably and since 2018 have run an online community with over 45,000 followers, whilst contributing regularly to national and local publications on the subject.

You may spot my family and I litter picking along the Basingstoke Road or enjoying the park at Swallowfield... please do say hello and I look forward to meeting and getting to know more of you in time.

**Cllr David Lamont  
Vice-Chair and  
Communications Lead**

[david.lamont@swallowfieldpc.gov.uk](mailto:david.lamont@swallowfieldpc.gov.uk)



**Parish News**

# Traffic Calming

Efforts to reduce traffic speed and increase road safety throughout the Parish are ongoing. Thanks to the dedication and enthusiasm of several local residents, Speedwatch activities throughout the Parish are continuing to detect and record large numbers of offending motorists. In the short time (three months) since our Swallowfield Speedwatch Group was formed, more than 500 vehicles have been clocked exceeding the limit and their details passed to Thames Valley Police.

Excessive speeding in Riseley has emerged as the most problematic issue in our Parish with multiple instances of repeat offending, and severe offending (>50% over the speed limit). However, we are not unique. Since the start of this year, Community Speedwatch has taken off throughout the Thames Valley and around the country with huge numbers of offenders detected. The Chief Constable of Thames Valley Police recently confirmed, publicly, that data

from all Speedwatch groups is consolidated to determine police action, and that three or more offences anywhere will result in a home visit by the police. The number of offenders is so high, however, that the police are struggling to keep up.

In addition, your group leaders recently met on-site with Tony Griffiths, Traffic Management Officer at Thames Valley Police. As part of his role, Tony liaises with our local highways authority (WBC) re safety issues, including speeding, on local roads. As a result of his visit a number of recommendations to increase driver awareness of speed limits have been forwarded to the council. Efforts are also underway to engage Thames Valley Police in direct enforcement measures at several local hotspots. To further strengthen our case for direct enforcement, our Black Cat traffic radar will be installed at key sites and profile traffic movements on a 24/7 basis.

Meanwhile, I'm pleased to

confirm that, thanks to action by Hampshire County Council, the 30mph speed limit on the Odiham Road now starts closer to the Wellington roundabout, and that prominent 30mph roundels have been printed on the road surface at the southern end of both the Odiham and Basingstoke roads. A 'build out' has also been installed opposite the Memorial Hall, which by narrowing the road should help to slow traffic.

My thanks to all our Speedwatchers for their continuing efforts. We will succeed in making our Parish a safer place for all road users; it may just take a little longer than we would like. Keep the faith!

**Cllr Ian Fullerton**  
**Transport Lead**  
 ian.fullerton@swallowfieldpc.gov.uk

## RECREATION

As the lead councillor responsible for recreation and a mother of two young children, the quality of the recreation facilities in our Parish are very close to my heart. We are very blessed to live in such a beautiful area with lovely open spaces to enjoy.

The Parish Council owns and is responsible for maintaining and modernising the two main recreation grounds in Swallowfield and Riseley. In Farley Hill, the King George V Playing Fields are held in trust and Wokingham Borough Council has responsibility for the land. The Parish Council works to make sure that the standard of recreation facilities is kept as high as possible so all our young people can enjoy them. This year, the Parish Council made the decision to make a significant investment in the play area in Riseley, which had started to look tired and worn. We are proud to be investing almost £40,000 re-fencing and resurfacing the area and introducing three major new pieces of equipment, together with activity boards. The changes have been half financed by earmarked funds resulting from development in the local area, with the remainder coming from our reserves.

The new look play area is scheduled to be completed by October this year and the Council hopes it will provide many hours of safe, fun time for our younger residents.

We have also spent funds on replacing the train in Swallowfield, along with

essential works on the zip line and general maintenance to keep the site as up to date as possible. We hope to be able to do more in the future.

As above, some of the funding for these projects comes from developer contributions, allocated to the Parish to be spent on our recreation areas. Swallowfield and Riseley have both seen developments and hence investment in these areas are possible.

We are in discussions with Wokingham Borough Council regarding how we move forward with improvements to the playground in Farley Hill. I hope to survey Farley Hill residents in the coming months to see what they may want.

There is much work to be done and if anyone has any feedback or maybe wants to join a working party please do get in touch.

**Cllr Laura Edmonds**  
**Recreation Lead**  
 laura.edmonds@swallowfieldpc.gov.uk



## Parish News

### "FANTASTIC" MAXSTOCK A FITTING LEGACY

On Saturday 2 July Swallowfield welcomed hundreds of local residents to a very special community event.

'MaxStock' was organised on behalf of Swallowfield Parish Council by Cllr Mark Binns and local residents Jonathan Sant, Ben Teale, David Scott, Abi Schmidt and Fred Holloway, with support from parish clerk Liz Halson, after longstanding villager Max Bowker, who died in 2018, left a legacy to fund a one-off event for local residents.

The live stage welcomed five acts – Let It Beate, Rosedale, The Green Man, Limpopo Groove and The Skangsters, whilst a family funfair, Circus Scene circus school and a range of local independent food sellers added to the entertainment and excellent atmosphere.

Cllr Mark Binns said: "Max's wish was for us to stage a community event for all ages that the entire Parish could enjoy. With our mini festival, featuring the family funfair and children's circus school, an indoor swing dance and band and a diverse range of musical acts, I hope that we achieved exactly that."

Parish Council chairman Cllr Jonathan Wheelwright added: "MaxStock was a fantastic event, superbly organised with wonderful acts and entertainment. It was tremendous to see the Parish back together having fun at a true summer's day event. Thank you from all of us to Max and his family."



### ANNUAL PARISH MEETING

Thank you to everyone who joined us for the Annual Parish Meeting at Swallowfield Parish Hall on 28 June.

Thank you also to our fantastic speakers, Natalie Gaibani of Farley Farms & Estate;

Tanja Maskell and Kate Amitage, who talked about their experience of hosting Ukrainian families; and Cllrs Ian Fullerton and Simon Taylor and Mike Goldsmith, who provided an update on Speedwatch.



# Open Gardens Proves Popular

### OPEN GARDENS PROVES POPULAR

Swallowfield welcomed residents and visitors to the annual open gardens on Sunday 3 July. Ten gardens, at Brookside Cottage, 5 Curlys Way, 9 Foxborough, Lambs Farmhouse, The Firs, Beehive Cottage, Norkett Cottage, Russetts, Wessex House and Brambles were on show as part of the National Garden Scheme event, raising money for Macmillan Cancer Support, Marie Curie, Hospice UK and The Queen's Nursing Institute. 342 people visited throughout the day, a one third increase versus last year, raising a fantastic £3,122.59 after costs were deducted. If you are interested in opening your garden in 2023, please contact **Martyn Dadds on 07775 838746** or via **[martyn.dadds@yahoo.com](mailto:martyn.dadds@yahoo.com)**.



## Local clubs and groups



### SWALLOWFIELD PARISH ALLOTMENT ASSOCIATION

What a summer we have had! With the hottest temperatures ever recorded in the UK and a long dry spell during the spring and into July, it is amazing that anything has grown!

But despite the challenging weather we have seen some bumper crops across the allotment of currants and berries as well as a glut of courgette and marrow. In the cool evenings the plotters have been turning out to water their fruit and vegetables and are now seeing the benefit of their hard work.

We are delighted to have a full allotment as we go into the autumn, with every plot occupied and a small waiting list of enthusiastic gardeners. We have subdivided a couple of plots to create some half plots too.

On 21 July 2022 we held our AGM and discussed plans for encouraging more plotters, maintaining the site to keep it safe and projects to improve the site using the money we raised at our open morning in May. We are delighted to have such an enthusiastic group of volunteers.

#### What to Do in Early Autumn

September is a month of harvests and tidying up the finished crops.

There isn't much that you can sow at this time of year, other than winter lettuces, salad leaves, spring onions and spinach but you can plant out spring cabbage plants, cranberries,

### THE LINK VISITING SCHEME IS LOOKING FOR MORE FRIENDSHIP VOLUNTEERS

The Link Visiting Scheme is a local charity based in Wokingham Borough that aims to help people struggling with the serious impact of loneliness and enable them to make friends and engage again with their community. Feeling lonely and isolated can have a negative impact on our health and can lead to low mood, stress, anxiety, and a lack of confidence. The Link Visiting Scheme works with volunteers who give time to visit an older person for a couple of hours once a week or fortnight. At the

moment, it has approximately 400 volunteers throughout the borough who often take our Link Friends out to coffee shops and garden centres.

The Scheme also has a growing program of social activities aimed at encouraging older people to venture out and meet others in a safe, friendly environment. These include regular pub lunches, friendship groups, singing, yoga, bowling, Friendship Tables in local cafes and lots more.

If you are interested in finding out more, please contact [marjie@linkvisiting.org](mailto:marjie@linkvisiting.org) or visit [www.linkvisiting.org/volunteer](http://www.linkvisiting.org/volunteer).

over-wintering onion sets and strawberries. Propagate from your own runners, planting the new baby plants into pots but leaving them attached to the mother plant.

Harvest any remaining onions, leaving them to dry off before storing them in a dry, cool place. Ripen and pick tomatoes. Help them along the way by cutting off all the lower leaves (especially if they are turning yellow). Help pumpkins and squash to ripen by trimming back some leaves. Continue watering and feeding them until harvesting them at the end of the September.

Sweetcorn cobs are usually ready for picking when the silks turn brown or black. Test by peeling back the outer leaves and digging a thumbnail into a kernel. If the juice is milky, not clear, the cob is ready for eating. Lift your main crop potatoes by the end of the month, on a dry day. As the stems and leaves die off, cut them off with a sharp knife, leaving 2cms of stem above ground.

Other jobs include cutting down asparagus ferns, turning your compost heap to aerate it, feeding and trimming celeriac, sowing green manure on cleared beds to prevent weeds, pruning out old blackberry canes and tying in new ones, lifting sweet potatoes and turnips, picking aubergines while their skins are still glossy and checking apples, pears and plums for brown rot and removing any infected fruit.

To find out more, please visit [www.swallowfieldallotment.org](http://www.swallowfieldallotment.org) or contact SPAA Secretary, Claire Hamilton via email: [secretary@swallowfieldpaa.org](mailto:secretary@swallowfieldpaa.org).

# £5,400

## Raised for British Ukrainian Aid



### COMMUNITY UNITES IN SUPPORT OF UKRAINE

An event powered by our local community raised over £5,400 for British Ukrainian Aid this summer. 'Arts and Crafts for Ukraine' was held at Swallowfield Parish Hall on Saturday 9 July. Over 60 contributors very kindly donated their wares to be sold, with all proceeds going to the charity.

As well as individuals, local groups were also involved, including Swallowfield Art Group, Swallowfield Needlecraft Group, Mortimer Studios, Odiham Art Group, Woodley Art Group and Wokingham Art Society. Visitors were entertained with music by Ray Burton and songs from Mia Valance.

The local community gave the event their overwhelming support, buying tickets, bidding for items in the silent auction and spending generously.

There were painting demonstrations by renowned professional artists Elizabeth Baldin and Jonathan Newey, who also donated paintings for the auction.

Families and individuals were able to watch or participate in a number of activities and demonstrations such as watercolour, wire sculpture, pewter work, china painting, rubbings and designing place mats.

A stalwart team served tea, cakes and sandwiches donated by home bakers and businesses including Henry Street, Warings and Wellington Farm Shop.

Jay Printers donated their services and Siren Craft Brew provided raffle prizes, vouchers and free cans of beer.

The event demonstrated the community's wholehearted support for those suffering in today's terrible circumstances.

### RECYCLING REMINDER

Residents are encouraged to recycle as much as possible, to help the Borough further improve its recycling rate.

Wokingham Borough Council has set a target of increasing the rate from the current 55% to 70% by 2030.

What you can put in a recycling bag:

- Cardboard
- Plastic bottles with their lids on.

- Plastic trays.
- Plastic tubs.
- Paper. Shredded paper must be contained in an envelope or can be composted.
- Tetra Pak/other cartons.
- Clean foil and foil trays.
- Tins and cans.
- Empty aerosol cans.

Please also make regular use of the food waste scheme and recycle other items, ranging from glass to electricals correctly.



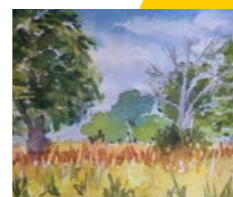
## SWALLOWFIELD ART GROUP

During our most recent sessions, we have been busy completing, mounting and framing work in preparation for the Swallowfield Show (at time of writing, just a couple of weeks away). SAG has its own marquee, where we exhibit solely work produced by members of the group, a lot of which is for sale at very reasonable prices. In addition, we are always well represented in the Art Competition section of the Horticultural Marquee.

An exciting challenge for amateur painters is that of painting 'en plein air' – in the open air – as opposed to using a reference, such as a photograph. This can be somewhat perilous in our unpredictable climate, but the days chosen for the group outing to Swallowfield Park were two of the hottest in July. Fortunately, the mature trees close to Pitt Bridge provided welcome shade.

The object of painting outside with the subject in full view is to use loose brushwork to capture the basic components of a scene, emphasising shadows and light, creating a lively and colourful impression of the subject. These may be used as reference studies for a more detailed work back at home.

The theory of plein air painting is attributed to Pierre Henri de Valenciennes (1750 – 1819) in



his work Reflections and Advice to a Student on Painting, Particularly on Landscape (1800). This style gained popularity during the mid and late 19th century and informed the work of impressionistic painters such as Monet, Pissarro, Sisley and Renoir.

Modern paints and lightweight equipment makes this technique far more accessible to today's artists. An artist's chair, or lightweight easel, a small watercolour sketch book, retractable brushes, collapsible water pot and a watercolour paints travel set are helpful tools.

Three of the paintings shown (all by SAG members) are of the view down the road from Pitt Bridge towards the Dower House. Though the subject is the same, the individual painting styles are very clear. Of the other two, one painting is of the view across the fields in Swallowfield Park. The other is a vista towards the church in Mortimer.

If you are interested in joining the group, please call Jenny Boddington on 0118 988 5804 for further details. We meet at Swallowfield Parish Hall on Mondays from 2pm - 4pm during term times.

Patricia Taylor

## THE SWALLOWFIELD CALICO TRUST

The Calico Trust (registered charity 236154) provides financial help to people living in Swallowfield Parish, including Loddon Court Farm, Stanford End, Riseley, Swallowfield, Farley Hill and the surrounding rural areas. There are five trustees who all live locally and include a Church representative and two people nominated by Swallowfield Parish Council. If you, or someone you know, feel the Trust could be of assistance, please let us know. Information is held in confidence and enquiries are always welcome.

Please contact either  
**Celia Adams on 0118 988 4661 / 07946 654424 or email celia8844@gmail.com)**  
or **Ros Riddell on 0118 988 2014 or email: ros.riddell@btinternet.com**



## CONNECTING COMMUNITIES IN BERKSHIRE

Based in the converted country farmhouse at Wyvols Court, Swallowfield we'd like to introduce our charity to residents that aren't already aware of us and our work.

Connecting Communities in Berkshire (CCB) have been working for almost 50 years as a charity, originally established as one of the 38 rural community councils in England. Community development has always been at the heart of what we do and our vision is for all communities in Berkshire to be strong, resilient, sustainable and able to take control of their own futures.

The last 50 years have seen us deliver a variety of projects that tend to have a rural focus like working with communities to write parish plans, improving rural life opportunities and rural

transport and affordable rural housing options. In Swallowfield Parish specifically we have been responsible for helping set up a flood resilience group and installing community orchards near the Riseley Village Tea room.

We relocated to Swallowfield from Theale in 2016 and have very much enjoyed life in the village and support the local halls, shops and pubs/cafes with our business whenever we can.

We are a friendly small team of four currently working to deliver projects that range from delivering a range of adult community learning courses to running an oil buying collective to save those living in rural areas money and helping low income families with their energy and utility bills.

To find out more, please visit [www.ccbberks.org.uk](http://www.ccbberks.org.uk) and find us on Facebook.

## SWALLOWFIELD BADMINTON CLUB AT SWALLOWFIELD PARISH HALL

MONDAYS, 8-00 - 10:00PM

We are a friendly group, based around the areas of Swallowfield, Riseley, Spencers Wood and Shinfield, who would warmly welcome new members. Our playing standards are varied and we are a non-league club.

Joining a badminton club is an ideal way to keep fit safely through low impact exercise and make new friends. Our season starts on 5 September. We hope to see you soon!

Please contact Daphne by telephone 07745 180108 or email [daphne\\_seamark@hotmail.com](mailto:daphne_seamark@hotmail.com) to ask about our first free taster evening.

A separate group of friends plays on Thursdays and would also welcome new members. Please contact Malcolm on 0118 988 2736.

## SWALLOWFIELD LOCAL HISTORY SOCIETY

We really did enjoy our spring evening dinner at The Mill House. The usual banter, with interesting discussions and knowledge shared by people who have been in, or have family who have been, in the village for many, many years.

We hope to see you at the Swallowfield Show; we share a marquee with the Art Group - do come and find us. Our display will show the villages in days gone by, with postcards collected by our President, Ken Hussey, and his wife Margaret.

Our Archivist Jennifer Highwood said: "Our mental picture of

Swallowfield in the past can sometimes derive more from what we see now than we realise. It is revealing to walk the length of Swallowfield Street and The Street and mentally eliminate the houses built in the last hundred years or so. It's surprising what gaps open up. Some of the sites would previously have been occupied by small businesses, a forge or a coal yard for example, but often the fields would have come up to the side of the road. This can affect one's reading of the census, as properties listed can appear to be beside each other, but sometimes be a long way apart. And if you thought Church Road was a fixture, think again, it's a fairly recent addition!

Our next meeting is on Thursday 15 September, when we look forward to welcoming Natalie Galbani whose subject is Farley Farms and Estate. Her talk is titled 'Our Family History and Ownership in the Local Area'.

We meet in the Rose room at Swallowfield Parish Hall on the third Thursday in the month, 7.30 for 7.45pm. We welcome anyone who is interested in our local history or particularly wants to hear the presentation of a specific speaker. You really will be most welcome.

Do check our website for update information and contact details: [www.slhsoc.org.uk](http://www.slhsoc.org.uk).





# View from the hill

We are well and truly into summer now, with the horse trials over, hay made, horse trials complete and wheat harvest complete – the day before we started it last year thanks to the dry weather!

We had feared for our grain given the drought and heatwave. Whilst good conditions for harvesting, an early hot spell can cause the wheat to ripen early and dry out before it is ready to combine. We took the decision this year to put some investment into our soil quality, with two lime applications in autumn and spring, plus spreading solid matter from the University of Reading's dairy farm, and a late slurry application in spring on some of the wheat. This paid dividends with a 30% higher yield than usual and a milling grade of wheat across all areas of the farm. The irony is that the extra income will probably just cancel out the investment made! However, as a long-term measure, controlling the organic matter content and acidity of the soil is good not only for crop nutrition, but for soil structure that prevents run-off (when heavy rain carries the topsoil away), and will ultimately reduce the amount of chemical and nutrient application needed. So we will continue with the programme of soil treatment until we incorporate all of our arable land.

We have also been extremely

busy on the property front, re-cladding some of our old barns to provide better hay storage, creating the new temporary grain store for our harvest, and building our new woodchip store on Farley Hill (by the water tower). In the next week or so the wooden cladding will go on and in the autumn we will plant screening trees/hedging plants. The concrete track in will look garish at first but will weather and dull down over the winter.

I am also excited to announce that our new tenant at the old Bridge Farm Grain Store has now opened his climbing wall business. Clip 'n Climb is a fun climbing activity for ages 2+, there is also a pizzeria/café for waiting parents. Finally, our solar farm on Castle Hill went live on 3 August, with a few final tidy-ups to happen to close down the construction phase. We look forward to seeing it settle into the landscape and the grass grow back to reduce the visual impact, with a plan to reseed the field below that has unfortunately died off and perhaps let this for horses in due course. Letting fields for grazing has been a huge revenue stream in the last few years, with the equestrian sector representing a huge local industry. The impact on the land can be high and due to our clay ground we do like to allow two acres per horse, so

we concentrate on trying to find knowledgeable tenants who can look after the grass with the future in mind.

The winter will represent a time to consolidate a lot of recent expenses (utilities for the climbing centre for example, and the woodchip store), before we look ahead to 2023 and what projects we will bring forwards. We have a live planning application to replace a subsiding cottage near Bridge Farm, and will soon be submitting an application via our partner promoters Angle Properties, to build some more industrial units also at Bridge. We also hope to have some news about working with a superb local farm shop brand to develop a site on the farm. These projects are expected to take a few years and as always we welcome your feedback when you see the applications.

In the meantime, we are enjoying the summer but would ask politely for some more rain so we can get the rest of our grass cut without fires (we had a small one on Farley Hill last month)! The desert-like appearance of the farm is also somewhat depressing, but no doubt the heavy rain will come when we least want it just as we need to drill next year's crops!



## RISELEY VILLAGE TEA ROOM

Back in February 2013 Swallowfield Parish Council was considering allowing the Memorial Hall to be used as a traditional tea room, as following the closure of the nursery the Hall was left tired and underused.

Happily, after due process, the proposal was approved and we could start work on giving the building a well overdue face lift. The Parish Council had a new kitchen fitted and a Riseley workforce got stuck in and on 1 June 2013 Riseley Village Tea Room was opened by Mary Bayliss, Lord Lieutenant of Berkshire.

During our tenure we have decorated throughout, rewired and updated the electrics, installed a new kitchen window, fitted new heaters in the toilets and had the gents'

loos reconfigured, boarded and skimmed the Hall ceiling, had the strip lighting removed and chandeliers fitted, seen a laundry room installed, had the staging removed and new floor to ceiling shelving fitted, had security cameras fitted, added floor to ceiling curtains (hugely expensive but fabulous), replaced the old heavy old doors with new bespoke ones and more. Caroline Cotton took on the overgrown garden areas and transformed them, installing a watering system and eventually we purchased the two large planters by the main doors.

Nine years on and times are changing as the Tea Room continues to thrive. This old bird not so much! I have, with a certain amount of concern from Ray, decided to retire. It's the Tea Room's 10th anniversary next year and we will certainly celebrate in style, however between now and then we

need to find someone to take over and expand on what we started in 2013. Recently we have really struggled with staffing as our dear Dot passed away and Christine moved to London to be near family. From seven permanent staff we are now down to five and even with our lovely youngsters at the weekends and volunteers helping when they can it's difficult. The diary is healthy and we are taking bookings for next year. Nothing is set in stone and new, younger, blood could move forward with fresh ideas.

So we are looking for extra staff, volunteers and gardening help, as well as an energetic new manager(s).

If you are interested in finding out more, please give me a call – I'm usually at the Team Room!

**Pam Wright (0118 996 7375)**

## RUSSELL PLAYERS Review by Andy Witting

In June this year we managed to stage our first production since February 2020, "A 'Collage of Comedy'".

Those of us lucky enough to catch the trio of comedy performances by the Russell Players are in no doubt that dramatics are back in Swallowfield and it is far from amateur. The whole machine worked smoothly, entertaining us with first rate acting, lovely stage sets, clever lighting and delightful refreshments. What a talented bunch we have in our midst.

Our senses were fed with sharp humour and witty dialogue in the diminutive but hugely creative 'Romeo and Juliet's Final Half Hour', written by Juliet Devon. This gem of a play asked us to suspend our pre-conceptions and imagine the hero might be called "Dave". Short but perfectly formed, it presented several of Shakespeare's best known passages and, through subtle alteration and reconstruction, lead us to a hilarious alternative and zany reality.

The simple set and Mitch Mitchell's direction kept the audience's attention firmly on the cleverness of the dialogue and brought out the best of the humour.

The second of the trio was 'Café Society', by Colin Calvert and directed by Chris Partridge. It focuses on the relationships between three characters, Pauline, Patrick and Luigi.

The star of the show, owing to her comic timing, is undoubtedly Tricia Harris as Pauline, who is onstage throughout. With Mitch Mitchell as

Patrick, the pair find shared interests that bode well for the future. As Luigi, the Italian waiter, Glyn Marshall adopted a convincing Italian accent and exuded the charm one would expect in such a role.

The scenery created by Chris Partridge and Juliet Devon was superb and Bryan Partington's lighting and sound served to develop the intimacy of the situation.

During the interval tasty food was served and the final offering was The Book Club of Little Witterington, by Joan Greening, directed by Mitch Mitchell. Jenny, played by Sarah Mapleston, is a leading light in the village Book Club. The Club has a stable membership but is looking for fresh blood. Enter Paula, a feisty East Ender, played by Juliet Devon, quite out of character with the rest of the Club membership. Reactions to Paula's arrival range from loving acceptance from Ruth, brilliantly played by Lynn Wright, interested acceptance from Sarah, played by Deni Smale and, obstinate rejection from conservative and change averse, Belle, the role of Sheila Partington. These ladies played their stereotype with skilful observation. All had performed earlier in 'Romeo and Juliet'.

One would be hard pressed to find an evening of such high comic, artistic and nutritional value on the amateur circuit. The reaction of the audience showed how much they enjoyed themselves. I suggest you book tickets for their next production as soon as they are available.

**Our Pantomime, on 19, 20, 23, and 26 November, is Goldilocks, Three Bears and the Detectives. Please visit [www.russellplayers.co.uk](http://www.russellplayers.co.uk).**



## LOCAL MEMBER UPDATE – WOKINGHAM BOROUGH COUNCIL

### Wokingham Leisure Centre Welcomes Its First Customers

The new multi-million pound Carnival Hub brings together a large leisure centre and a new home for Wokingham library, with flexible cultural use of some space.

The Carnival Hub includes swimming pools, a children's splash pad, a health suite (sauna, salt and steam rooms), 120 fitness suite, fitness studios including group cycling studio, a café and a dual-purpose hall for sports or 400 seat-cultural performances. There will also be a specialist gym for those with long-term health conditions.

It will be one of the most energy-efficient leisure centres in the country as it includes the installation of solar panels and air source heat pumps on the roof.

This is a really exciting moment for the residents of Wokingham



## CHURCH UPDATE

This year's church fete was both the welcome return of a village institution and the beginning of a new era. Despite some misgivings on leaving the 'garden party' feel of The Mead House, the move to the recreation ground proved very successful. Thank you to everyone who supported it – a record crowd, some much-appreciated new volunteers, and both traditional and new activities all added to the happy community atmosphere. Many thanks to Jean Clark Maxwell for opening the fete; Micka, for his energy in organising children's races; and Jasdeep and Vicky at the shop for coming to our rescue when our ice cream freezer died at a critical point. We raised over £5,000, funds which are essential if we are to keep the church running – and, above all, it was one of those great Swallowfield community days.

As we turn our thoughts to autumn and Remembrance Sunday, to avoid any misunderstanding, please note that the Act of Remembrance, with a two minute silence, is at 10.15am at the war memorial on **Sunday 13 November**, followed by the church service (with Beavers, Cubs and Scouts parade) which straddles the 11.00am silence. Given the scarcity of buses locally, it is ironic that one reached us last year right in the middle of the two minute silence. Have you ever watched an embarrassed bus driver trying to navigate a mini-roundabout silently? It isn't possible!

Now I am looking for your ideas. Last year, we clothed the war memorial in poppies. We still have those seven metre-wide bands

Borough. The new centre has something for everyone and represents a six and a half year journey for me as part of the project management board.

The regular opening hours will be Monday to Friday 6am - 10.30pm and Saturday and Sunday 7am - 8pm. Timetables for the main pool, training pool and group workout can be viewed online.

### Fly Tipping and the New Anti-Social Behaviour (ASB) Service

A WBC ASB officer noticed a van parked suspiciously on the side of Sindlesham Road.

Once questioned by the officer, the men claimed they were sorting through the clothing and were going to take the unwanted items to a local waste service for disposal.

The men were asked to show their waste carriers licence, which demonstrates that they are registered to transport and dispose of waste. WBC does not tolerate fly-tipping and anyone caught disposing of waste illegally in our

Borough will face penalties or prosecution.

### The New Anti-Social Behaviour Service

The team patrol troublesome hot spots in the Borough seven days a week, including evenings and weekends. The team deals with a range of issues including noisy neighbours, fly-tipping, nuisance bonfires, abandoned vehicles or bothersome vehicle use including car meets, noise and dust from building sites, unauthorised advertising, mismanagement of waste and unlawful encampments.

The new service includes an animal warden to handle stray dogs, tackle animal neglect and promote responsible ownership.

### Our Bus Service

I am pleased that we have been able to secure and maintain a bus service to our villages and hope that you all have an excellent end of summer.

### Stuart Munro

Member for Swallowfield, Wokingham Borough Council

of poppies, quite a lot of spare poppies and a bit more wool. What should we do this year? We could cover the nearby walls or part of the Parish Hall in poppies; or give the memorial a flowing 'skirt'. We could put the banners at different places up The Street; or create a Poppy Trail; or aim for window displays; or have a display in or outside the church ..... or what? Please do email me at stanleyba01@gmail.com with your preferences and suggestions.

Looking ahead, please note the Christmas Market on **Saturday 3 December** in the Parish Hall; Carols by Candlelight in the church at 4pm on **Sunday 18 December**; and, also at 4pm, the memorable Christmas Eve Crib Service, where we provide nativity costumes for children from age two to teens.

After a long vacancy, we shall be very pleased to welcome our Team Rector, Nigel Beer, and his wife, Janet, when they join us in October. He introduces himself at [www.loddonreach.org.uk](http://www.loddonreach.org.uk). As well as his official licensing on **26 October**, do join us for his first main service at All Saints at 10.30am on **Sunday 30 October**, for our annual 'patronal' service to celebrate All Saints Day on 1 November.

### Barbara Stanley Church Warden

All Saints Church, Swallowfield



Saturday 1 October 2022, 2pm to 4pm, Swallowfield Parish Hall

A community favourite, the Swallowfield Pre-School Jumble Sale is back! We would be delighted if you would join us for an afternoon of browsing and buying - stalls will include:

- Ladies', men's and children's clothes and shoes
- Toys and games
- Books
- Bric-a-brac
- Refreshments

Donations of good quality and nearly new items may be dropped off at the Hall on the morning of the Sale, between 8.30am and 11am only; all items will be vetted this year to ensure all donations are of saleable quality.

**All proceeds will go directly to our charity-run Pre-School. We hope to see you there!**



## SWALLOWFIELD PRE-SCHOOL

Registered Charity Number: 1025250

Sports day races and leavers' celebrations were the finale to a magical year of play and learning at Swallowfield Pre-School, with children taking part in obstacle races, running races and novelty races, cheered on by enthusiastic parents, grandparents and friends. All the children received medals in recognition of their sporting efforts – perhaps we'll see one of them in a Commonwealth Games of the future!

We continued to welcome new children and their families throughout the year and delighted in the enthusiasm and conversation of the children in our care as we explored resources, embraced new experiences, discovered new information and built our knowledge. We made good use of our amazing setting – a huge hall, garden with mud pit and flower beds, patio area and the surrounding wide open spaces.

We are now looking forward to the start of the autumn term – welcoming back the current children

on register who will have grown and be excited to share their news of the summer, and meeting new families who we will welcome to the Pre-School 'family'.

Our child-centric approach to teaching, learning and development will continue, with all activities tailored to meet the specific needs of individual children. We will continue to provide the appropriate input to stimulate, challenge, encourage, nurture and praise the children and to instil in them confidence and a positive approach in preparation for school and life in general.

For more information about the Pre-School, to receive a prospectus or to register for a place, please contact us at [info@swallowfieldpreschool.org.uk](mailto:info@swallowfieldpreschool.org.uk).

**Swallowfield Pre-School offers morning sessions, Monday-Friday at Swallowfield Parish Hall 9.15 - 12.30. We are a fully inclusive setting and have been rated 'Good' by Ofsted.**

Helen Coulter, Manager

## SWALLOWFIELD MEDICAL PRACTICE

### Appointments

Despite a rigorous campaign to try and lessen the number of wasted appointments, we are still finding lots of people do not advise us when no longer wanting their appointment. We have in excess of 15,220 patients now and we could offer each of those missed appointments to the patients who might otherwise have to wait.

Dr Beacham	8
Dr Prabhakar	4
Dr Dugmore	8
Dr Milligan	14
Dr Hegarty	5
Dr Bates	6
Dr Whittaker	5
Dr Ghaffar	1
All three paramedics	23
Lead nurse Anne	14
Nurse Kerry	13
Nurse Emma	12
HCA Alison	18
HCA Kate	14
Both phlebotomists	8
Pharmacist Simon	9
All 3 MSK staff	10

**The table shows for the month of July 2022 the number of appointments not attended.**

The majority of these missed appointments were for ten minutes but some of these appointments were for 20 minutes. Assuming that all appointments missed were ten minutes in length, an absolute minimum of 28.5 hours' worth of appointments were wasted by people who did not cancel their appointment.

There are a variety of ways you can cancel an appointment if there is a queue on the telephone.

You can also cancel appointments by replying **CANCEL** to the appointment reminder SMS text message you have received if we have a mobile phone number for you. You can also email [swallowfield.practice@nhs.net](mailto:swallowfield.practice@nhs.net) to advise us, or complete the online 'cancel an appointment' form on our website.

Please can we respectfully ask patients to cancel all appointments they no longer need. Remember, if you are struggling to get an appointment, we might have been able to help you were it not for the people who did not cancel their appointment. Thank you.

## LOCAL CONTACTS

### **Swallowfield Medical Practice**

0118 988 3134 (general) or 0118 988 3473 (appointments)

### **All Saints' Church, Swallowfield and Nutbean Cemetery**

0118 988 5923 or email [office@loddonreach.org.uk](mailto:office@loddonreach.org.uk)

**Royal Berkshire Hospital** 0118 322 5111

**Wokingham Hospital** 0118 949 5000

**Emergency Service** 999

**Medical (Non-emergency)** 111

**Police (Non-emergency)** 101

**Thames Water (Emergency)** 0800 714 614

**24hr Floodline Service** 0845 988 1188

**SSE Electricity (Emergency)** 0800 783 8866

**Gas (Emergency)** 0800 111 999

**Swallowfield Community Responders** 0118 988 4384

**Reading Buses** 0118 959 4000

**Readibus** 0118 931 0000

**Keep Mobile** 0345 544 0850

**Wokingham Borough Council** 0118 974 6000

**Citizens Advice (Wokingham)** 0808 278 7958

**Farley Hill Primary School** 0118 973 2148

**Lambs Lane School** 0118 988 3820

**Spencers Wood Library** 0118 988 4771

**Riseley Village Tea Room** 0118 99 67375

**Parish Stores** 0118 988 5138

## DID YOU KNOW?

Our redesigned newsletter, now 16 pages instead of 24, will result in a saving of over 32,000 sheets of paper annually.

## CONTACTING THE PARISH COUNCIL

Councillors can be contacted through Liz Halson, the Parish Clerk.

**0118 988 5929**

[clerk@swallowfieldpc.gov.uk](mailto:clerk@swallowfieldpc.gov.uk)

[swallowfieldpc.gov.uk](http://swallowfieldpc.gov.uk)

Your Parish Councillors are: John Anderson, Mark Binns, Catherine Drew, Laura Edmonds, Ian Fullerton (Planning Chair), David Lamont (Vice-Chair), Margaret McDonald, Simon Taylor and Jonathan Wheelwright (Chair).

## Facilities for hire

The Main Hall, Davies Room and Rose Room at Swallowfield Parish Hall are available for **weddings, parties, clubs/groups, meetings and other events.**

Please call 0118 9885 444 or email [finance\\_officer@swallowfieldpc.gov.uk](mailto:finance_officer@swallowfieldpc.gov.uk)

For information on hiring Victory Hall in Farley Hill, please call 0118 324 6600 or email [hire@victoryhalltrust.com](mailto:hire@victoryhalltrust.com).

